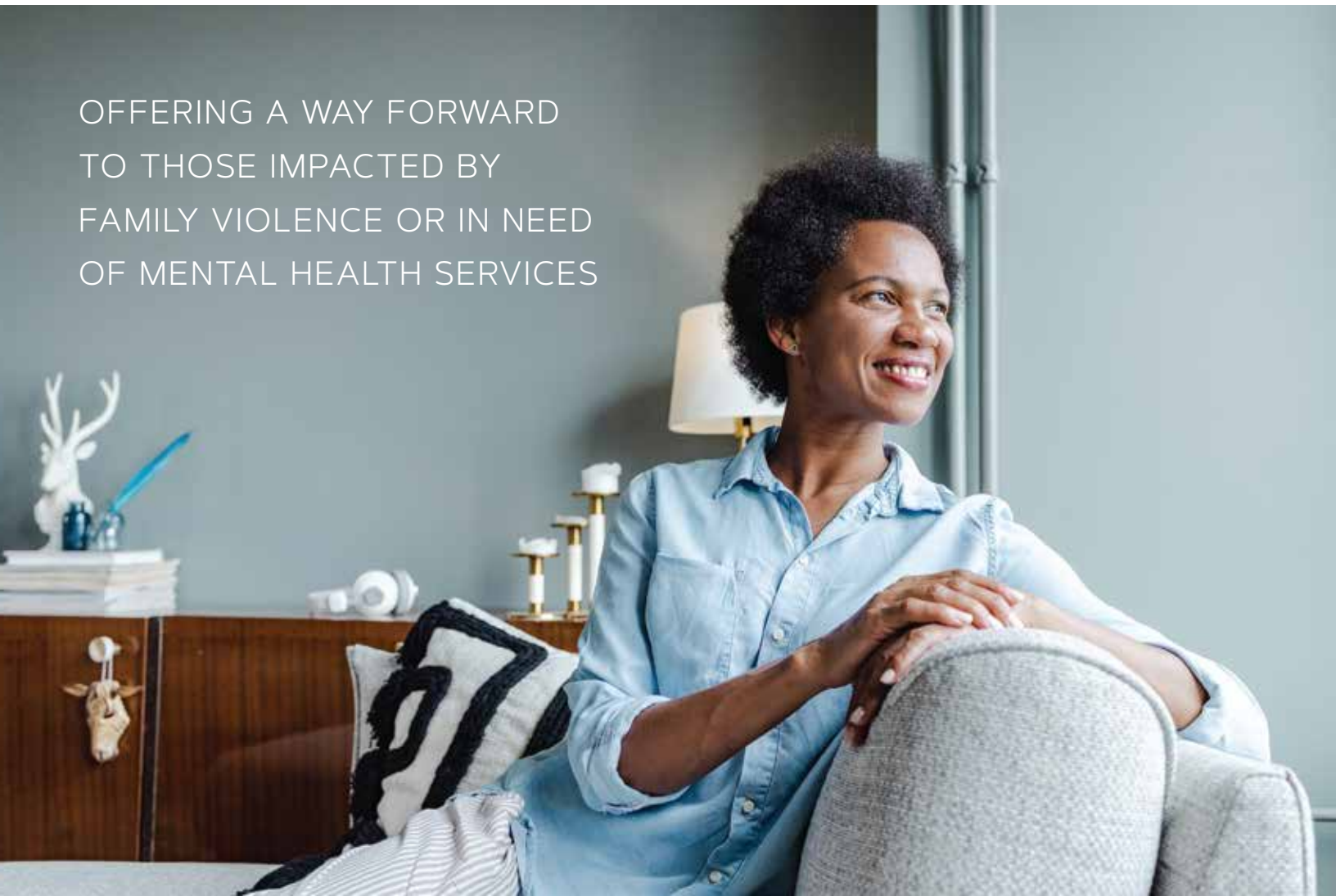


# 2023 ANNUAL IMPACT REPORT

**COMPASS**  
OF CAROLINA EST. 1919

OFFERING A WAY FORWARD  
TO THOSE IMPACTED BY  
FAMILY VIOLENCE OR IN NEED  
OF MENTAL HEALTH SERVICES





# 2023 WAS A YEAR FULL OF NEW BEGINNINGS!

## A MESSAGE FROM OUR **LEADERSHIP**

It is your support and trust in our work that has sustained us for 105 years. Compass of Carolinas has steadfastly served as a safety net in our community, providing valuable resources for families grappling with the impacts of family violence or mental health crisis. We invite you to reflect on our collective impact through this report and consider strengthening, or beginning, your relationship with Compass.

We are sincerely grateful for you!

Laurie Rovin                      Cheryl Hicks and John Riddle  
*Executive Director*            *Co-Chairs, Board of Directors*

## PROGRAMS

Compass offers an array of targeted programs within three strategic departments. Many of these services are offered in both English and Spanish\* and all are led by licensed Behavioral Health Therapists and Counselors.

### COUNSELING

- Individuals (Adolescent, Adult)
- Couples, Family, and EAP Counseling

### FAMILY VIOLENCE INTERVENTION PROGRAM

- Anger Management\*
- Survivors of Domestic Violence\*
- Batterer/Perpetrator\*
- Veteran Resiliency
- Second Chance (high truancy/expulsions)

### REPRESENTATIVE PAYEE CASE MANAGEMENT

- Veterans Assistance
- SSI / SSA, or Homeless individuals

\*Offered both in English and Spanish

### MISSION

Provide compassionate services to individuals and families in need through counseling, education and financial benefits management.

### VISION

A community strengthened by resilient individuals and stable families.

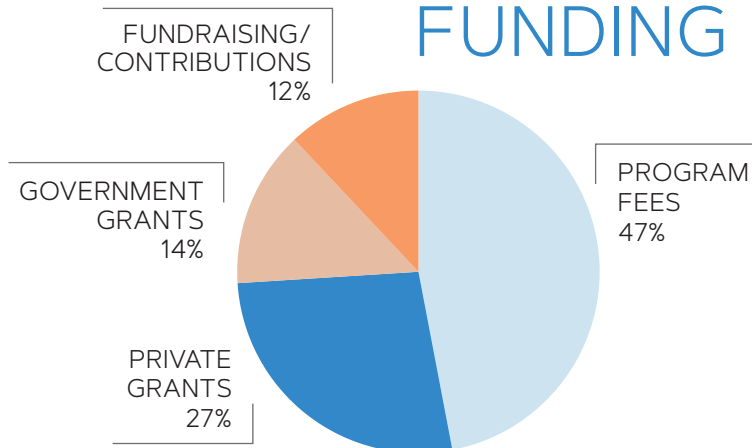
### CORE SERVICES

Counseling, Family Violence Intervention Program (FVIP), Representative Payee Case Management

### GOALS

Create a sustainable funding stream to meet mission impact.

## FUNDING



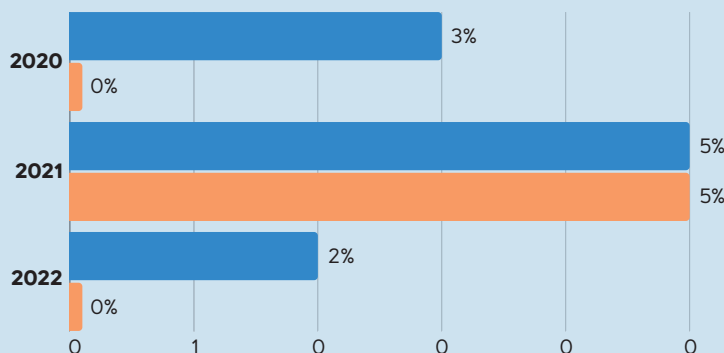
# IMPACT

Compass has seen a reduction in recidivism rates, following a spike during COVID, for graduates from Greenville County of both our Batterer Intervention Program (BIP) and Anger Management Program (AMP).

■ BIP ■ AMP

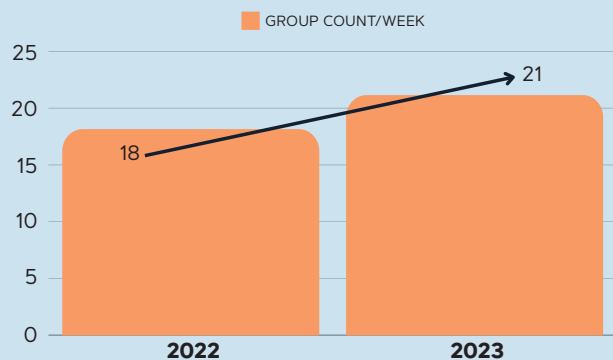
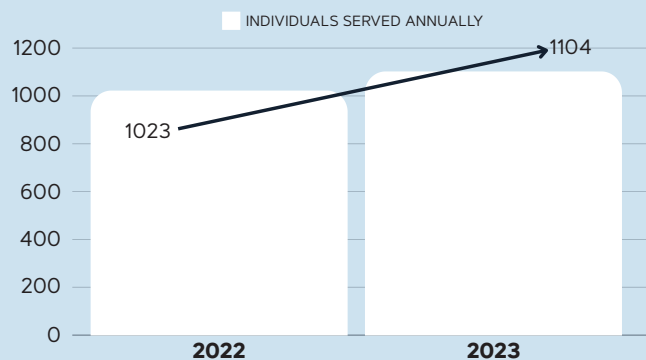
## REDUCTION IN RECIDIVISM RATE OF COMPASS GRADUATES

(COMPASS PARTICIPANTS FROM GREENVILLE COUNTY)



## COMPASS HAS A PROVEN RECORD OF INCREASE IN ACCESS TO MENTAL HEALTH SERVICES YEAR-OVER-YEAR.

Psychoeducational groups offered per week are up **12.5%** and number of individuals served is up **7.4%**.



# CLIENTS

DURING 2023, COMPASS SERVED A TOTAL OF **1104 INDIVIDUALS**.

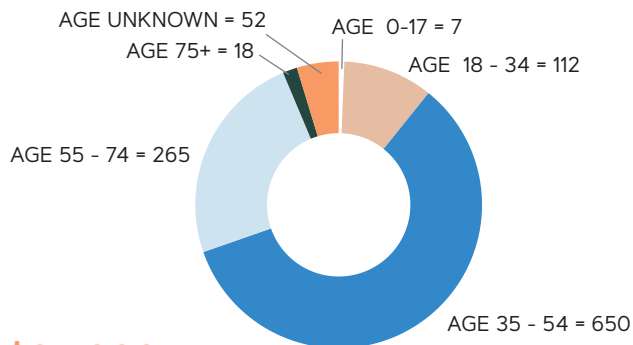
Within this group, 113 individuals were veterans, 52 identified LGBTQ+, 56 were refugees/immigrants, 607 had disabilities, and 623 were involved in the justice system.

**79% FVIP/Counseling**  
**28% Representative Payee Support**

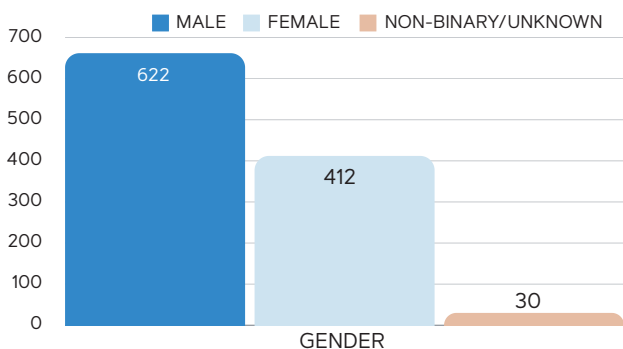


**53% OF CLIENTS HAVE INCOMES LESS THAN \$25,000.**

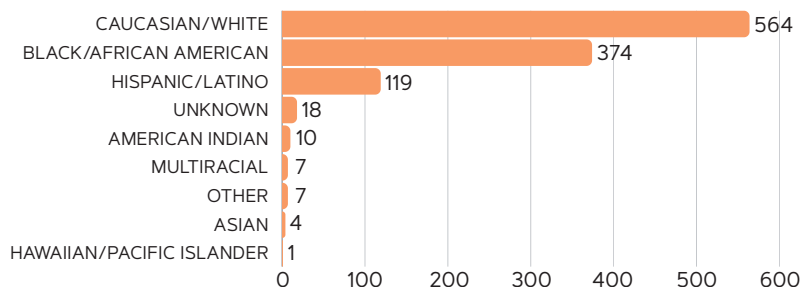
## AGE RANGES



## GENDER



## ETHNICITY





# EVENTS

## Compass of Carolina Held its First Annual Hopefall Gathering On October 18, 2023

Thanks to our many sponsors, staff and volunteers, and the 200 guests that attended, we had an incredible inaugural event. Our emcee, Fox Carolina's Myra Ruiz, shared the podium with impactful keynote speaker Michael Cogdill, a family violence survivor. We also heard the moving testimony of Amber, a Compass client whose family has received lifechanging benefits from our work together.

We hope you'll join us for our next event on October 11, 2024, where we will celebrate Compass of Carolina's 105th year anniversary of helping those in need find the right path in life!



## 2023 Grants & Hopefall Gathering Sponsors

3M  
 CapTrust Community Foundation  
 Carolina Center for Medical Excellence  
 Dabo's All In Team Foundation  
 Department of Crime, SC Attorney General's Office:  
 • Violence Against Women's Act (VAWA)  
 • Victims of Crime Act (VOCA)  
 Department of Crime - Victims of Crime Act (VOCA)  
 F.W. Symmes Foundation  
 John I. Smith Charities  
 Neil M. Timmons Foundation

Sisters of Charities SC Foundation  
 Spinks Family Foundation  
 The Jolley Foundation  
 United Way of Greenville County  
 Wells Fargo Foundation  
 Andrea Olvera  
 Bank of Travelers Rest  
 Bernadine Atkins  
 BMW Manufacturing  
 Bradshaw Gordon & Clinkscapes  
 Christophillis & Gallivan Community Journals  
 Count On Us Controller Services

Creative Builders  
 Elliott Davis  
 Fidelity Bank  
 Greenville Drive  
 Heavy Salvage  
 Innovation Builders  
 InvestiNet LLC  
 ITW Hartness  
 Janice Baddley & Associates  
 Jason Elliott, Attorney at Law, LLC  
 Jim and Heather Volz  
 John Riddle  
 Local Pizza Pie Company  
 Long Branch Baptist Church

Matt Crider, JHA Sotheby International Realty  
 Molinia Healthcare  
 North American Rescue  
 North Greenville University  
 Piedmont Natural Gas  
 Pinnacle Financial Partners  
 PLUS Inc  
 Rail Engineering Services, LLC  
 SEC Construction  
 Stacey Jackson  
 STEM Search Group  
 Stone & Associates  
 The Insurance Source  
 TOSHIBA  
 United Community



**CompassofCarolina.org**  
 info@compassofcarolina.org  
 864-467-3434  
 100 Rutherford Rd.  
 Greenville, SC 29609